

SOLUTION FOR PORTABLE 3G/4G & WiFi



1616 S. Stapley Dr. Ste 103,
Mesa, AZ, 85204, U.S.A
www.rfwel.com | 480.218.1877

Solution for Portable 3G Cellular/ 4G WiMax Internet

Integration of 3G/4G data modem, cellular/WiFi/WiMax router in portable carrying case with pre-installed pigtails, cables & antennas.
JOB # BWA-40850-xxxx

DRAWN BY: RT (Engr) APPROVED BY:	SIZE	LIC NO AZ ROC # 253407	DWG NO BW-408501007-001	REV 2A
FREQ(s): 850MHz Cellular, 1.9GHz PCS, 2.4GHz ISM, 2.6GHz WiMax,	SCALE NO SCALE	FRN: 0018086041	SHEET 1 OF 1	

D

D

C

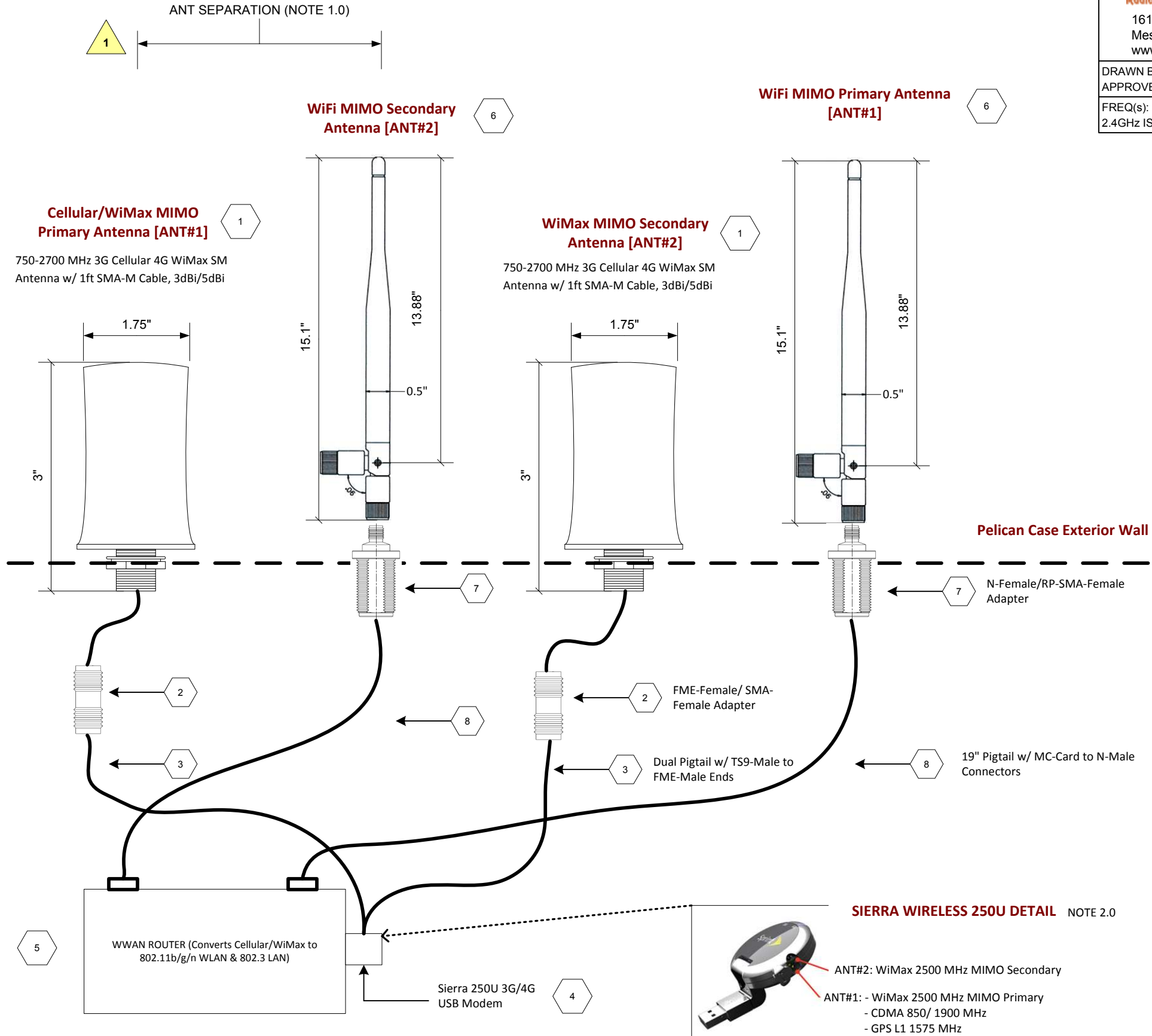
C

B

B

A

A



Bill of Materials

ITEM	QTY.	RFWEL SKU	DESCRIPTION
1	2	ANTMBSM317678B	750-2700 MHz Cellular, WiFi, WiMax SM Antenna, SMA-M
2	2	ADPSMAFFMEF	SMA-Female (Jack) / FME-Female (Jack) Adapter
3	1	PIG_CLR250U_2	Sierra 250U Dual Pigtail (TS9_Male/FME-Male)
4	1	S250U	Sierra 250U 3G/4G Modem (TS9-Female)
5	1	MBR1200	CradlePoint MBR1200 Cellular/WiMax/WiFi Router (MC)
6	2	ANTHG2409RD-RSP	2.4GHz 9dBi WiFi Rubber Duck Antenna {NOTE 3}
7	2	ADPRPSMAFNF	N-Female (Jack)/ RP-SMA-Female (Jack) Adapter
8	2	PIGMCNM19	19" Pigtail with MC/N-Male connectors

NOTES:

- 1.0 Provide maximum separation distance between primary/secondary antennas at each frequency band 2.4GHz WiFi & 2.6GHz WiMax
- 2.0 If using only one antenna, plug into the primary antenna "ANT1" (see 4G Modem Pic). See www.rfwel.com/forums for a discussion on when MIMO dual antennas are most effective. To use with other modems select appropriate pigtail as shown below:

Pigtail Part Numbers

- Clear 4G USB (PXU1900) → SKU = RFWADPPXU1900NF
- Sierra 250U USB → SKU = PIG_CLR250U (or PIG_CLR250U_2 for dual connections)

3.0 Contact us to replace antennas shown with higher gain antennas or antennas with different properties.

SIERRA WIRELESS 250U DETAIL NOTE 2.0

ANT#2: WiMax 2500 MHz MIMO Secondary
ANT#1: - WiMax 2500 MHz MIMO Primary
- CDMA 850/ 1900 MHz
- GPS L1 1575 MHz