



Canada:: 2425 46th Avenue
Montréal, Québec H8T 3C9
T :: 514 422 9110 F :: 514 422 3338

United States :: 30111 Settle Chapel Hill
North Carolina 27517 T :: 919 928 8033

Email: sales@bluetreewireless.com
www.BlueTreeWireless.com

BlueTree 6000 Series

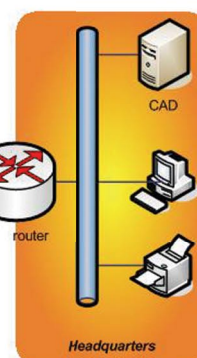
The BT-6800 series offers high speed internet connectivity over the HSPA cellular network to in-vehicle mission critical applications.

Whether to issue violations, look up license plates, report status of accidents, transmit patient data, or enhance dispatch, the BT-6800 provides mobile workers a continuous feed for their real-time and bandwidth demanding applications.

- Mobile Resource Management
- Public Safety (Police, Fire, Ambulance and EMS)
- Transit
- Field Force Automation



Mobile Data In Action!



Benefits

- Provides ubiquitous cellular coverage with no maintenance fees
- Improves emergency response time
- Mobile transition of patient data
- Increases worker's safety by optimizing communication with dispatch center
- Improves incident management and route planning
- Provides broadband connectivity to multiple devices in the vehicle

Features

- Ultra-reliable always-on cellular link
- HSPA speeds of up to 14 Mbps
- Rugged electrical and mechanical design
- Multiple interfaces: Ethernet, USB, Serial
- Remote diagnostics, configuration and updates
- Router and IP pass-through modes

Simple. Reliable. Wireless modems.



Mobile Data GSM HSPA

Canada:: 2425 46th Avenue
Montréal, Québec H8T 3C9
T :: 514 422 9110 F :: 514 422 3338

United States :: 30111 Settle Chapel Hill
North Carolina 27517 T :: 919 928 8033

Email: sales@bluetreewireless.com
www.BlueTreeWireless.com

Why Choose BlueTree?

BlueTree Wireless Data Inc. is a leading developer and manufacturer of wireless modems and software solutions for commercial and industrial applications. Blue Tree Wireless' modems are designed to operate on cellular data networks worldwide enabling M2M applications in the Public Safety, Fleet Management, Field Service, SCADA and telemetry markets. BlueTree Wireless Data Inc. is a division of SIXNET, LLC.

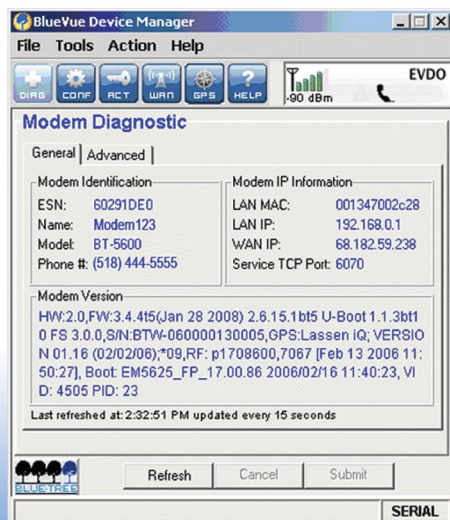
"Imagine the possibilities!"

Product Specifications

Wireless Interface	Quad-band 800/850/1900/2100 MHz WCDMA/HSDPA/HSUPA (w/ diversity) Backward compatible w/Quad-band 850/900/1800/1900 GPRS/EDGE	
Peak Data Rates	Theoretical speed: 14 Mbps	Typical speed: 2.2 Mbps
Ethernet Interface	1x RJ45 Ethernet 10/100 auto-sensing (BT-6800)	
Serial Interface	1x RS-232 Serial DB9 115200bps	
USB Interface	1x USB2.0 mini	
LED Status Indicators	Power, WAN, Signal, RS232, Ethernet Link & Activity	
Inputs & Outputs	1x Reset Button, 1x Digital Output, 1x Digital Input	
Dimensions	BT-6800: Steel 120 x 96 x 32 mm (4.7" x 3.77" x 1.25"), 453g (1 lb)	
Power Input	8 - 30 Vdc (12Vdc nominal)	
Power Consumption	@ 12 Vdc Transmit: 320 mA average (Max. 800 mA), Standby: 115 mA	
Environmental	Operating Temp: -40 to +75°C (-40 to 167°F) Shock: IEC68-2-27, Vibration: IEC68-2-6 Humidity: 5 to 95% non-condensing	
Certifications	EMC- FCC, part 15 Industry Canada, ICES-003	



Software Tools



BT-6800

The BlueTree 6800 can easily be configured, monitored and managed using the following BlueVue software applications.

BlueVue Device Manager
For initial setup and configuration

BlueVue Monitor
Quick and easy diagnostic dashboard



Simple. Reliable. **Wireless modems.**

revised 03/05/2009